

All India Coordinated Research Project on Agrometeorology

CRIDA, Santoshnagar, Hyderabad – 500 059

Daily Crop Weather Information as on 19 November 2018

Attention: Rajiv Maheshwari, OSD, ICAR

Significant Weather Features (IMD)

- The Deep Depression over Southeast Arabian Sea moved further nearly westwards with a speed of 18 kmph during past 06 hours. It lay centered at 0530 hrs IST of today, the 19th November, 2018 over Southeast Arabian Sea near latitude 11.2°N and longitude 67.0°E, about 600 km west-northwest of Agatti and 1430 km east-southeast of Socotra. It is likely to move west-northwestwards away from Lakshadweep area. It is very likely to maintain the intensity of deep depression during next 12 hours and weaken into a depression thereafter.
- The low pressure area lies over southeast and adjoining southwest Bay of Bengal and Equatorial India Ocean with associated cyclonic circulation extending upto 3.1 km above mean sea level. It is likely to become more marked over central parts of south Bay of Bengal and adjoining Equatorial Indian Ocean during next 24 hours. Under its influence, Increase rainfall activity with isolated heavy to very heavy falls very likely over coastal Tamilnadu and south Coastal Andhra Pradesh during 19th to 21st. Isolated heavy to very heavy falls likely over south Rayalaseema, South Interior Karnataka and isolated heavy rainfall over Kerala on 20th & 21st November.
- The present feeble Western Disturbance as an upper air cyclonic circulation at 3.1 km above mean sea level over north Pakistan and adjoining Jammu & Kashmir persists and another Western Disturbance likely to affect Western Himalayan region from 22nd November onwards. Under the influence of above disturbance isolated precipitation likely over Jammu & Kashmir during next 48 hours and isolated to scattered precipitation over Western Himalayan region from 22nd November onwards.
- The images showing the latest satellite picture in figure. 1.

Main Weather Observations (IMD)

- Rainfall observed (from 0830 hours IST to 1730 hours IST of yesterday): Rain/thundershowers observed at many places over Kerala; at a few places over Lakshadweep and Andaman & Nicobar Islands; at isolated places over Tamilnadu & Puducherry.

- Maximum temperature departures as on 18-11-2018: Maximum temperatures were appreciably above normal (3.1°C to 5.0°C) at most places over Marathwada; at many places over Vidarbha, Chhattisgarh and Telangana; at a few places over Rajasthan, Madhya Pradesh, East Uttar Pradesh, Odisha, Madhya Maharashtra and Saurashtra & Kutch and at isolated places over Jharkhand, Rayalaseema & North Interior Karnataka and above normal (1.6°C to 3.0°C) at a few places over Gangetic West Bengal, Coastal Karnataka, Lakshadweep and Tamilnadu & Puducherry and at isolated places over Jammu & Kashmir, Himachal Pradesh, Kerala and Andaman & Nicobar Islands. They were below normal (-1.6°C to -3.0°C) at many places over Sub-Himalayan West Bengal & Sikkim and at a few places over Assam & Meghalaya, Arunachal Pradesh, Haryana, Chandigarh & Delhi, West Uttar Pradesh, Bihar and Punjab and near normal over rest of the country.
- The highest maximum temperature of 37.0°C was recorded at Bhuj (Saurashtra & Kutch) over the plains of the country.
- Minimum temperature departures as on 18-11-2018: Minimum temperature were appreciable above normal (3.1°C to 5.0°C) at many places over Telangana & Rayalaseema; at isolated places over West Rajasthan, Saurashtra & Kutch and Coastal Andhra Pradesh; above normal (1.6°C to 3.0°C) at most places over Madhya Maharashtra and interior Karnataka; at a few places over south Konkan & Goa, Marathwada and Tamilnadu & Puducherry; at isolated places over West Madhya Pradesh, East Rajasthan, Odisha and Assam & Meghalaya. They were appreciable below normal (-3.1°C to -5.0°C) at isolated places over Bihar and Gangetic West Bengal; below normal (-1.6°C to -3.0°C) at a few places over East Uttar Pradesh; at isolated places over Jammu & Kashmir and East Madhya Pradesh and near normal over rest of the country.
- The lowest minimum temperature 8.6°C was recorded at Mandla (East Madhya Pradesh) over the plains of the country.

Weather Warning during next 5 days (IMD)

- 19 November (Day 1): Heavy to very heavy rain likely at isolated places over coastal Tamilnadu & Puducherry, south Coastal Andhra Pradesh and south Rayalaseema. Squally winds speed reaching 45-55 kmph gusting to 65 kmph is very likely to prevail over central parts of south Arabian Sea. Sea condition is very likely to be rough to very rough over these areas. Squally winds 40-50 kmph gusting to 60 kmph is likely to prevail over southeast & adjoining southwest Bay of Bengal and adjoining Equatorial India Ocean. Sea condition is very likely to be rough to very rough over these areas. Fishermen are advised not to venture into the above mentioned areas.

- 20 November (Day 2): Heavy rain at a few places with isolated heavy to very heavy very likely at isolated places over coastal Tamilnadu & Puducherry and isolated heavy to very heavy at isolated places over south Coastal Andhra Pradesh, south Rayalaseema, South Interior Karnataka and isolated heavy at isolated places over Kerala. Squally winds speed reaching 45-55 kmph gusting to 65 kmph is very likely to prevail over central parts of southwest Arabian Sea. Sea condition is very likely to be rough to very rough over these areas. Squally winds 40-50 kmph gusting to 60 kmph is likely to prevail over southwest Bay of Bengal, along and off Tamilnadu coast, Gulf of Mannar, Palk Strait and adjoining Equatorial India Ocean. Sea condition is very likely to be rough to very rough over these areas. Fishermen are advised not to venture into the above mentioned areas.
- 21 November (Day 3): Heavy to very heavy rain at isolated places likely over Tamilnadu & Puducherry, south Rayalaseema, South Interior Karnataka and heavy rain at isolated places over Kerala.
- 22 November (Day 4): No weather warning.
- 23 November (Day 5): No weather warning.
- The weather outlook for the period of seven days i.e 19 to 26 November 2018 forecasted (*Provided by Real-Time*)
- *Weather Forecasts from NOAA/NCEP collected from <http://monsoondata.org/wx2/> rain/thundershower may occur at a few places over Kerala, Tamilnadu & Puducherry Lakshadweep and Andaman & Nicobar Islands. (Fig. 2).*

Agricultural activities (AICRPAM-CRIDA)

Jharkhand

Weather condition

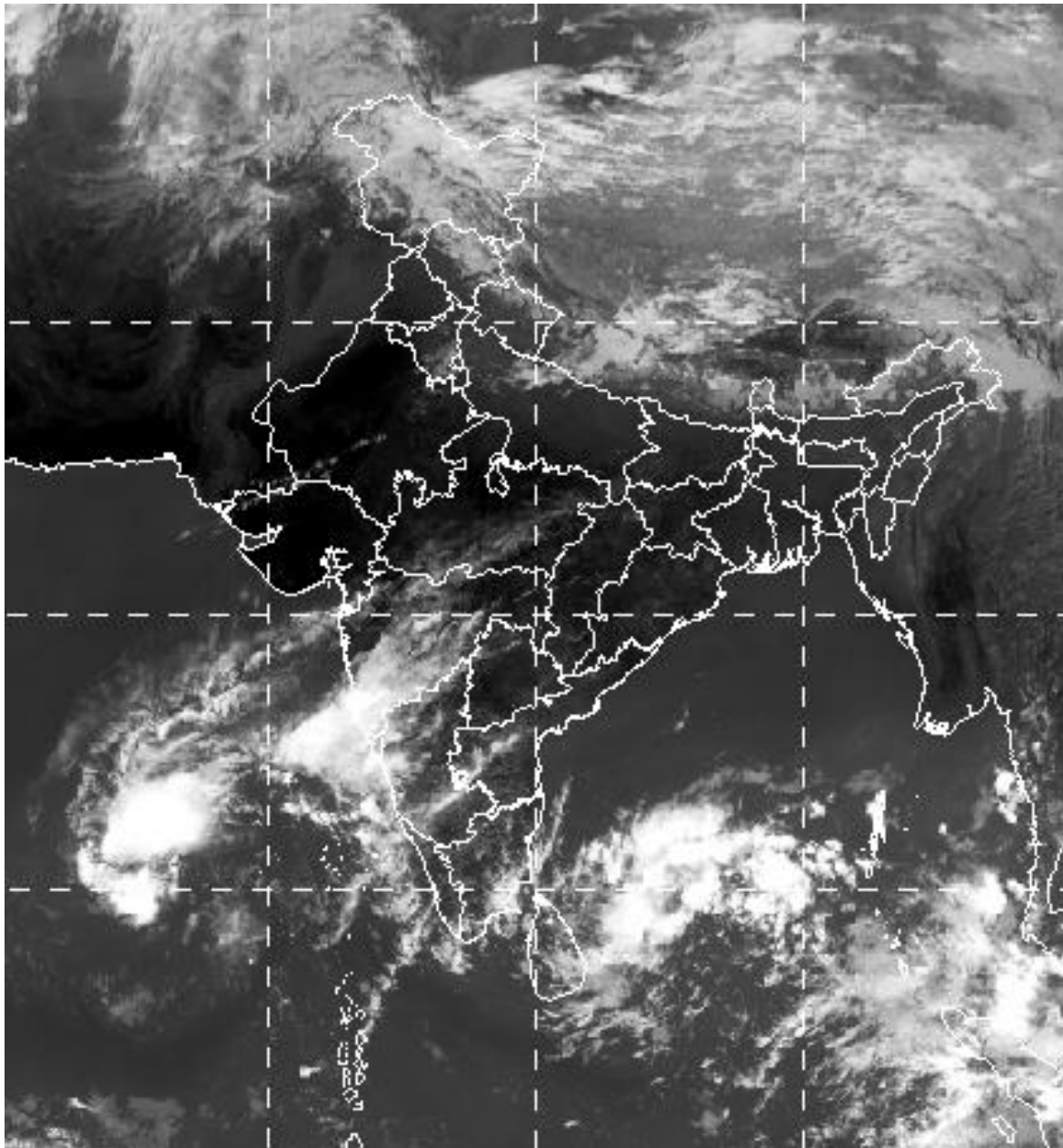
Dry weather prevailed in Jharkhand state during past few days. Daily maximum and minimum temperatures are ranged from 24.4 to 27.6 and 15.1 to 17.2 °C. Maximum and minimum temperatures were 25.7 and 15.0 °C against its normal value of 26.2 and 16.8 deg °C, respectively.

Contingency measure:

- Wheat: Farmers having limited irrigation facility and wish to cultivate wheat crop may select one of the recommended varieties like HDR- 77, K-8027, Birsa genhu ? 3 etc. 50 kg seeds are required for cultivation in one acre. Before sowing seed should be treated with fungicide like Bavistin. Surface seeding of wheat- Those field, where

soil remains moist after harvesting of rice may be used for surface seeding of wheat. After harvesting of rice, the field may be divided into smaller plots according to slope & construct channels for irrigation. The seed rate will be 60 kg per acre. Seed should be treated with cow dung mixed in water in such a manner that one layer of cow dung remains on the seed and the seed does not adhere each other. Sowing may be done by broadcasting of seeds in such a manner that seed sticks in soil and after 15 days of sowing apply immediately recommended dose of fertilizer (Urea 85 kg, DAP 50 kg and Muriate of Potash 25 kg per acre).

- Linseed: Recommended varieties of Linseed for this region are Sweta, Shubhra, T-397 etc. 8-9 kg seeds are required for cultivation in one acre. Barley - Select improved variety like Jyoti, Ratna, D.L.-36, B.R.-32 (all irrigated condition) and B.R.-31, K.-125 (un irrigated condition). 40 kg seeds are required for cultivation in one acre.
- Gram (Chick pea): The recommended varieties for Deshi (indigenous) gram are B.G.-372, B.G.-256, K.W.R.-108, Pant G.-186, Pant G.114 and for Kabuli gram are H.K.-94-134, B.G.-1053, B.G.-1003 etc. 30 kg seeds for deshi variety and 40 kg seeds for Kabuli type varieties are required for cultivation in one acre.
- Pea (Grain): Sowing of pea for grain may be done with the recommended varieties like Rachna, Swarnrekha, D.D.R.- 23 etc. 30 kg seeds are required for cultivation in one acre.
- Lentil: Sowing of lentil may be completed with recommended varieties like P.L.- 406, P.L.-639, D.P.L.-15, D.P.I.- 62 etc. 10 -12 kg seeds are required for cultivation in one acre. Potato - Immediately sow the seed of recommended variety like Kufri Ashoka, Kufri Pukhraj, Kufri Lalima, Kufri Pushkar and Kufri Kanchan.
- Vegetables: Seedlings of winter vegetables (cauliflower, cabbage, chilli, tomato etc.) may be raised in nursery bed. Farmers having seedlings of these vegetables may transplant in main field. Other vegetables (radish, palak, carrot, French bean etc.) may be sown in field. Before sowing, seeds must be treated with fungicide like Bavistin.



**Figure: 1. Latest available satellite picture as on 19 November 2018 at 0230 Hrs (IST).
(Source: IMD).**

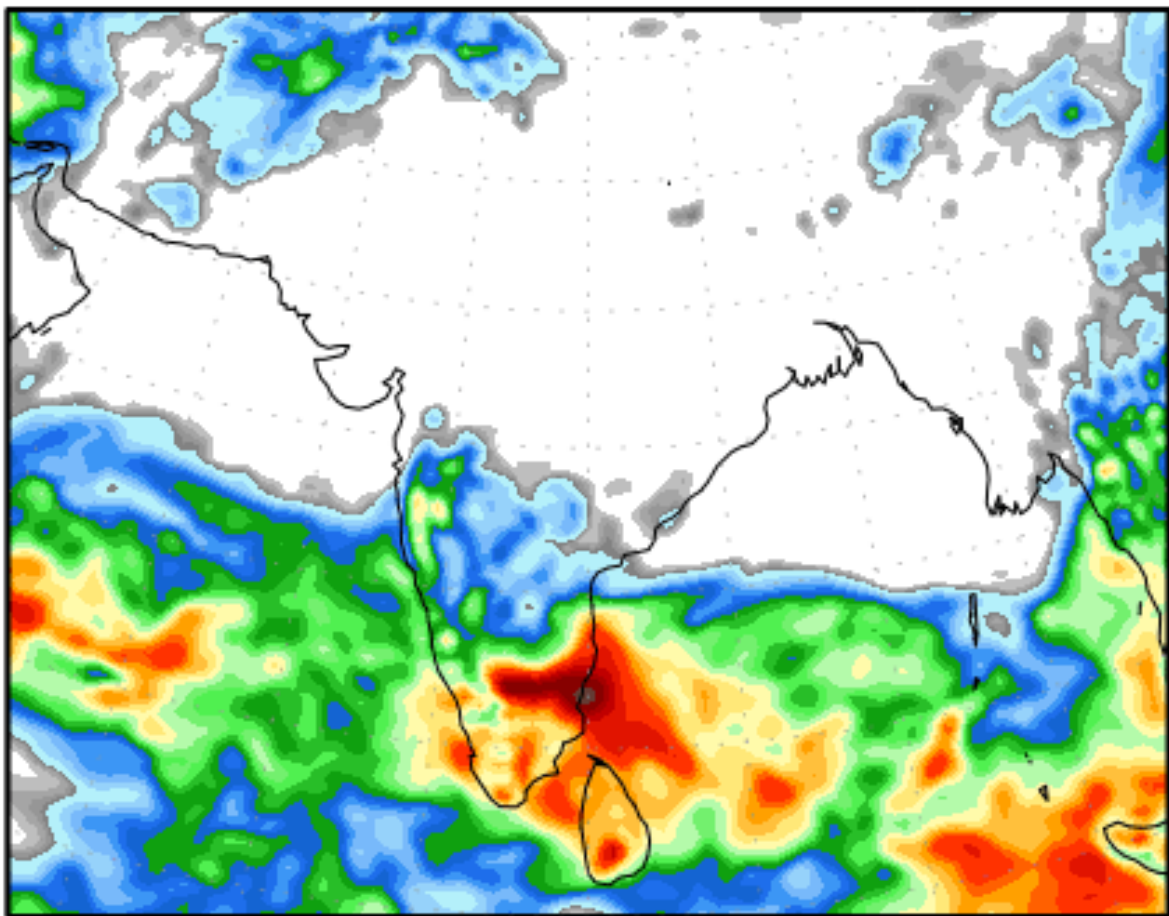


Figure: 2. Precipitation forecast for 13 to 20 November 2018 (Source: NOAA NCEP).